

INSTALLATION INSTRUCTIONS

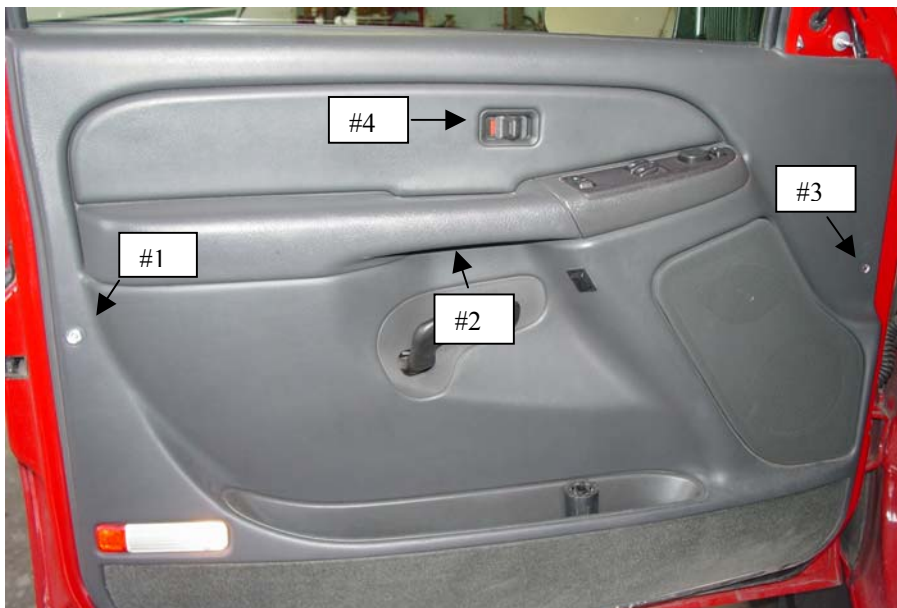
Models: 6141 – GM 2003 – 2006 (& '07 classic) - **with stock power fold mirrors**
6141T- GM 2003 – 2006 (& '07 classic) - **with stock power fold & turn signal mirrors.**

Do not attempt to manually extend or retract the mirrors. They should be moved under their motor power only!!

Tools required for the installation are: 10 mm socket, 7 mm sockets, and a philips screwdriver. If you have any questions after reading this installation manual, please call our service department at (800) 337-2557.

REMOVAL OF EXISTING MIRROR:

1. Remove the trim panel on both doors (note – Newer GM doors do not have retaining clips located around the doors – they have four screws then the panel lifts up and off). To remove the trim panels, start by removing the triangular shaped trim piece and insulation foam in the mirror mounting area.
2. Next you will have four screws to remove (see diagram). Screws #1 and #3 are behind a small trim plug that pops off to reveal the screw. Screw #2 is under the door handle. Screw #4 is a 7mm screw located under the door lock. The lock cover can be removed by gently prying it off with a flat tipped screwdriver. Next remove the panel that is around the door handle, it is held in place with clips.



3. Now you can lift off the door trim panel. When lifting the panel off, watch out for the electric wires and bulb that goes to the door courtesy panel. (It is not necessary to remove the arm rest control panel, but if you wish to do so there is a 7 mm screw behind the door trim panel and is located in the front and positioned on the bottom of the control panel that will first have to be removed.) On the

bottom of the control panel you will see a black connector and a blue connector, unplug both of these mirror connectors. Now you are ready to remove the stock mirrors.

4. While supporting the mirror, use a 10 mm socket to remove the 3 nuts that hold the stock mirror in place. Keep the stock nuts, they will be re-used when you install the Power Vision mirrors.
5. Remove the stock mirror.

MOUNTING POWER VISION MIRRORS:

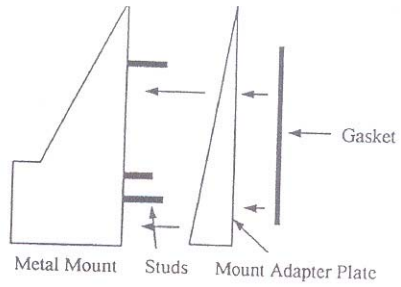
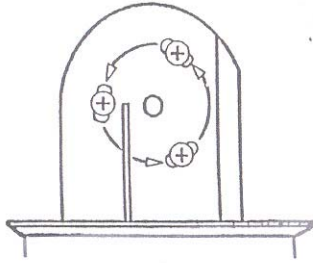
1. With the hardware provided for Power Vision mirrors are six mounting studs (three for each side). The blunt, short end of each stud must be screwed into the triangular-shaped body mount. The studs must go in the threaded holes in the mounting bracket, then slide the mount adapter plate and gaskets onto the studs (see diagram on page 3).
2. While supporting the mirror, align the body mount with the mirror mount lines on the vehicle door. Run the mirror wire (lead adapter) into the door and plug into the panel under the arm rest control panel.
3. Make sure everything is properly aligned before partially tightening down the stock nuts. When you are satisfied that everything is properly in place, tighten the stock nuts. A torque of 70 inch pounds is recommended for tightening the nuts to the studs.
4. Before you put the door trim panels back in place, it will be necessary to reprogram the modules in the doors to change the RPS code from DL3 (power fold) mirrors to DPF (power extend) mirrors. This can be done by any GM/Chevy dealer. This simply tells the truck that it now has power extending mirrors instead of power folding mirrors. Should your dealer have any questions on reprogramming the modules they can contact GM at 1-800-828-6860.

ADJUSTMENTS

1. **The mirror assemblies can be swept closer or further from vehicle door.**
This is accomplished by sliding the black rubber boot off of the mount (toward the mirror) to reveal the inner side of the mount. Three screws going into oval slots will be visible (see diagram below). WHILE SUPPORTING THE MIRROR ASSEMBLY, loosen the three screws, you will feel the notches as you slowly move the mirror assembly. After adjusting the mirror to your satisfaction, carefully tighten the screws back down. The torque for the three screws is 25 inch pounds, DO NOT exceed this torque setting or damage to the knuckle may result. The rubber must then be put back in place. Repeat this process with passenger door.

2. When installation is complete, we recommend running the mirrors in and out several times to break-in the motor. DO NOT MANUALLY EXTEND OR RETRACT THE MIRRORS ... THEY MUST RUN UNDER THEIR OWN MOTOR POWER ONLY!! For ease of break away, extend mirrors approximately two inches prior to breaking away. No lubrication is necessary.

Diagram 4



To assemble the mount first insert the studs then slide on the mount adapter plate and gaskets onto the studs.