

## INSTALLATION INSTRUCTIONS

Models: 6130 & 6140 -- GM 2003 – 2006 (& '07 classic) - with stock power mirrors  
6130T & 6140T -- GM '03 – '06 (& '07 classic) w/stock power & turn signal mirrors

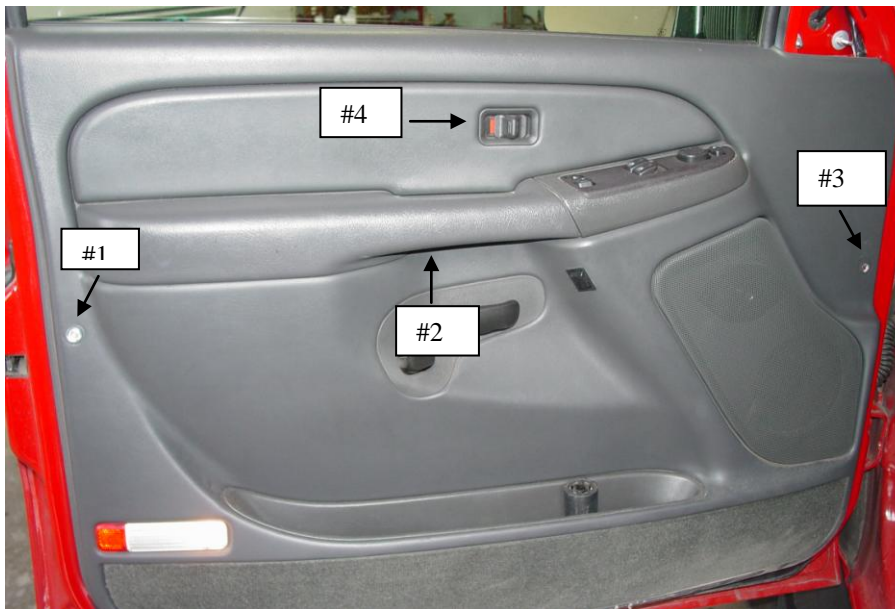
**Do not attempt to manually extend or retract the mirrors. They should be moved under their motor power only!!**

Tools required for the installation are: 10 mm and 7 mm sockets, a screwdriver, phillips screwdriver, needle nose pliers, electricians tape and a sharp tool for cutting a hole for the in/out switch. If you have any questions after reading this installation manual, please call our service department at (800) 337-2557.

**Before you start, we suggest that the windows be rolled down and disconnect the ground terminal from the battery**

### REMOVAL OF EXISTING MIRROR:

1. Remove the trim panel on both doors (note – Newer GM doors do not have retaining clips located around the doors – they have four screws then the panel lifts up and off). To remove the trim panels, start by removing the triangular shaped trim piece and insulation foam in the mirror mounting area.
2. Next you will have four screws to remove (see diagram). Screws #1 and #3 are behind a small trim plug that pops off to reveal the screw. Screw #2 is under the door handle. Screw #4 is a 7mm screw located under the door lock. The lock cover can be removed by gently prying it off with a flat tipped screwdriver. Next remove the panel that is around the door handle, it is held in place with clips.

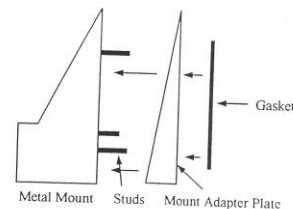


(\*\*\*Note: you may only have screws #2 and #4\*\*\*)

3. Now you can lift off the door trim panel. When lifting the panel off, watch out for the electric wires and bulb that goes to the door courtesy panel. (It is not necessary to remove the arm rest control panel, but if you wish to do so there is a 7 mm screw behind the door trim panel and is located in the front and positioned on the bottom of the control panel that will first have to be removed.) On the bottom of the control panel you will see a black connector and a blue connector, unplug both of these mirror connectors. Now you are ready to remove the stock mirrors.
4. While supporting the mirror, use a 10 mm socket to remove the 3 nuts that hold the stock mirror in place. Keep the stock nuts, they will be re-used when you install the Power Vision mirrors.
5. Remove the stock mirror.

#### MOUNTING POWER VISION MIRRORS:

1. With the hardware provided for Power Vision mirrors are six mounting studs (three for each side). The blunt, short end of each stud must be screwed into the triangular shaped body mount. The studs must go in the threaded holes in the mounting bracket, then slide the mount adapter plate and gaskets onto the studs (see diagram).



2. While supporting the mirror, align the body mount with the mirror mount lines on the vehicle door. There will be a hole in the mirror mount area on the vehicle door to run the mirror wire through.
3. Make sure everything is properly aligned before partially tightening down the stock nuts. When you are satisfied that everything is properly in place, tighten the stock nuts (leave one of the nuts loose for the ground). A torque of 70 inch pounds is recommended for tightening the nuts to the studs.

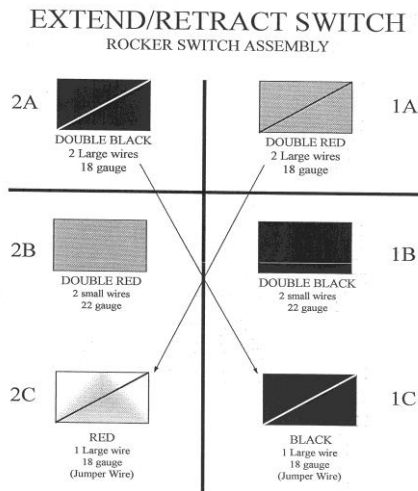
#### WIRING

**YOU MUST HAVE POWER MIRRORS TO FOLLOW THE BELOW WIRING INSTRUCTIONS .... IF YOU DO NOT CURRENTLY HAVE POWER MIRRORS, THE WRONG SET HAS BEEN ORDERED. (*BEFORE YOU START THE WIRING PROCESS, PLEASE DISCONNECT THE NEGATIVE CABLE FROM THE BATTERY*)**

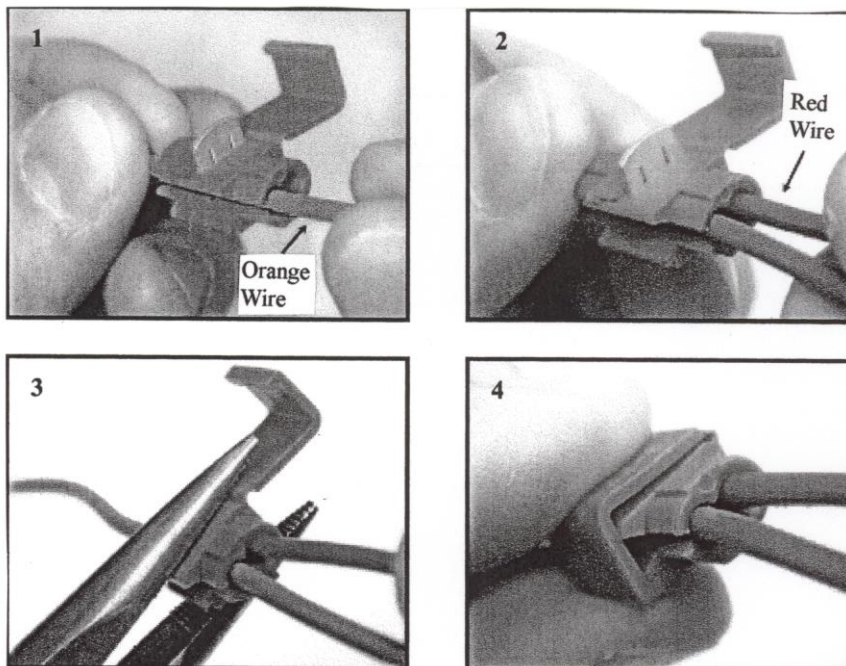
1. Using the measurements on page 5, cut a hole for the in/out switch. We recommend placing the in/out switch on the driver's door on a flat spot near the door handle. Before you cut the hole, be sure to check the depth for the in/out switch, you will need at least 1 1/4" clearance. It is important to follow measurements on diagram - - the switch should fit snugly but not bind. The in/out switch will be snapped into place later in the installation.
2. The next step is to run the two-wire harness. Pop off both ends of the boot (see diagram 1 on page 4). To run the two wire main harness, start by fishing the

passenger's side end of the harness through the driver's door and out on the door side of the boot. To fish wire through the boot, tape it to a long screwdriver (or use a fish wire) and push the screwdriver through the boot. Next, fish the wire through the opening through the cab and run the harness up under the dash. (Be careful when running the harness as to not interfere with the emergency brake.) To run the harness into the passenger side door, repeat the process above. When complete, the ends of the boot can be put back into their original position. After the main wire has been run into the passenger side door snap the connector from the main harness into the connector from the mirror.

3. Push the in/out switch into the hole in the driver's door trim panel that was cut earlier. To re-attach the in/out terminals into their proper position see diagram.

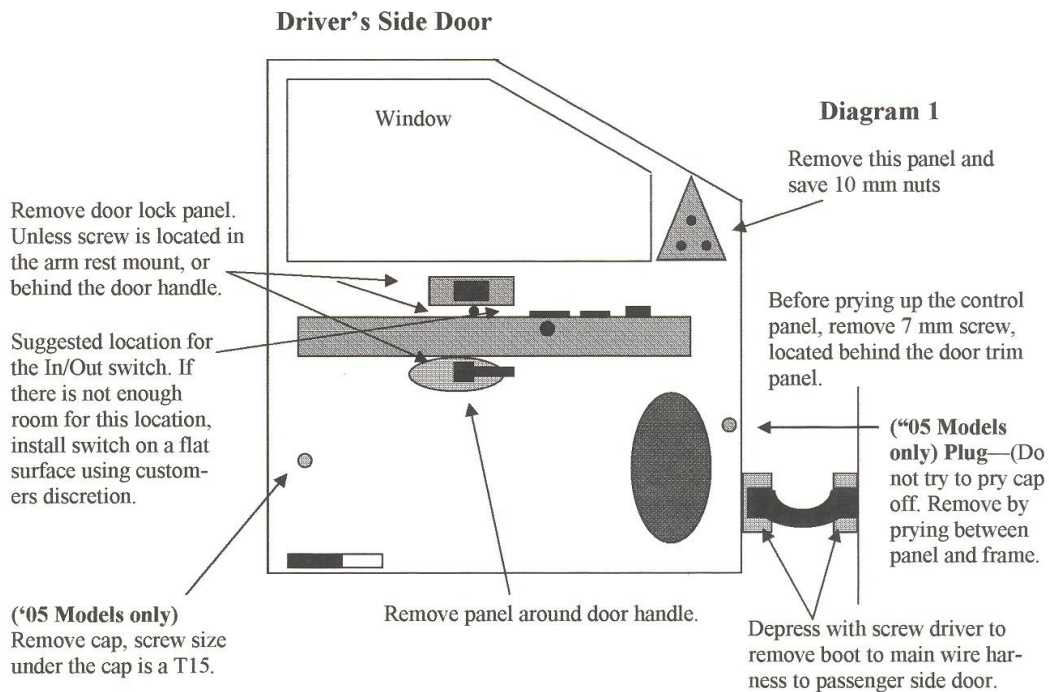
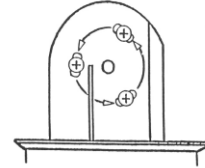


4. For the power source (red wire), splice into the orange wire that plugs into the back of the tilt switch (you may see two orange wires – splice into the smaller one) using the scotchlock provided. Place the orange wire in the outer slot of the scotchlock and the red wire in the right end of the inside slot, crimp and clamp as shown. Crimp the ring terminal provided onto the black wire and ground it between the 10 mm nut on one of the mirror studs.



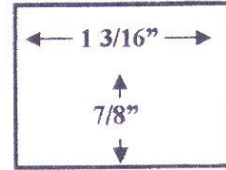
ADJUSTMENTS

- The mirror assemblies can be swept closer or further from vehicle door.**  
 This is accomplished by sliding the black rubber boot off of the mount (toward the mirror) to reveal the inner side of the mount. Three screws going into oval slots will be visible (see diagram). **WHILE SUPPORTING THE MIRROR ASSEMBLY,** loosen the three screws, you will feel the notches as you slowly move the mirror assembly. After adjusting the mirror to your satisfaction, carefully tighten the screws back down. The torque for the three screws is 25 inch pounds, **DO NOT** exceed this torque setting or damage to the knuckle may result. The rubber must then be put back in place. Repeat this process with passenger door.
- When installation is complete, we recommend running the mirrors in and out several times to break-in the motor. **DO NOT MANUALLY EXTEND OR RETRACT THE MIRRORS ... THEY MUST RUN UNDER THEIR OWN MOTOR POWER ONLY!!** For ease of break away, extend mirrors approximately two inches prior to breaking away. No lubrication is necessary.



### CORRECT HOLE SIZE FOR IN/OUT SWITCH

*Note: You must cut the hole to a maximum size of 1 3/16" x 7/8". There must be at least 1 1/2" depth for the switch.*



Caution! Cutting the hole too small and forcing the switch into the undersized hole could cause the in/out switch to stick in an operational mode. This will cause the extension motors to have continuous power applied after they have reached their stop position either in or out. The result of this condition is motor failure due to overheating.

An improper installation of the in/out switch that results in motor failure or damage will void the product's warranty.